

# SMS Probe for HP SiteScope and HP OVIS®

SMS Probe extends HP SiteScope and HP OpenView Internet Services with SMS service testing and monitoring capabilities. SMS Probe simulates SMS service end-users sending and receiving Short Messages over the air and delivers detailed performance data to SiteScope or OVIS. SMS Probe integrates seamlessly with HP SiteScope and HP OVIS.

SMS Probe has been designed to supply network operators, service providers and MVNOs with a highly functional and reliable tool to monitor and analyze the quality and performance of SMS services from an end-user's point-of-view.

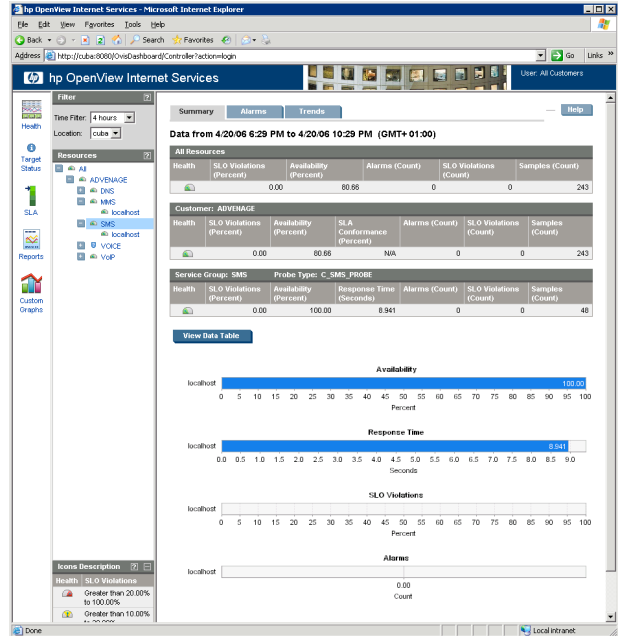
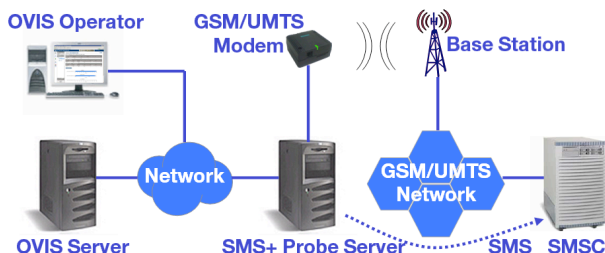
Compared to traditional solutions it follows a new implementation approach allowing for best-in-class reliability and performance. As a probe application for HP SiteScope and HP OpenView Internet Services, SMS Probe enables mobile network operators, service providers and MVNOs to monitor SMS services using an industry standard performance management system. This avoids expenditures by running separate OSS systems or integrating non-standard systems into their performance management environments.

SMS Probe comes as a full service package including consulting, installation, support and software maintenance.

## Features

- Monitoring of availability and performance of SMS services
- Monitoring of roaming and competitor interconnections
- Monitoring of SMS info services
- Monitoring of SMS to E-Mail interconnection
- Monitoring of SMS to and from Large Accounts (SMPP 3.4)
- GSM and UMTS bearer support
- SMS content check
- Remote configuration via web interface

SMS Probe gathers availability and performance data by periodically sending and receiving Short Messages (SMs) to and from an SMSC.



Upon reception of a test SM, the round trip time is calculated and logged to HP SiteScope or HP OVIS along with other data concerning time-stamps, transfer rate and status.

The measurement data can be instantly displayed on the dashboard and may be analyzed later with HP Business Availability Center or with HP OVPI.

Critical system states – e.g. SMSC or interconnection failures – as well as SLA violations are detected in time and can be reported to the Network-Management-Center using standard reporting and alarming functions. This allows reacting quickly on performance bottlenecks and system failures and helps reducing revenue loss due to system unavailability.

Support for HP BPM is in preparation.

## System requirements

- Windows 2000 Pro, 2000 Server, XP Pro, 2003 Server
- HP SiteScope 9.x and HP OVIS 5.x, 6.x
- GPRS modems (Siemens MC35i, Audiotel Modem); Siemens HC 25 and other supported UMTS/HSDPA modems.

Additional information:  
e-mail: [sales@advenage.com](mailto:sales@advenage.com)  
web: <http://www.advenage.com/>

Business Partner



ADVENAGE GmbH  
Blumenhagenstr. 10  
D-30167 Hannover, Germany